

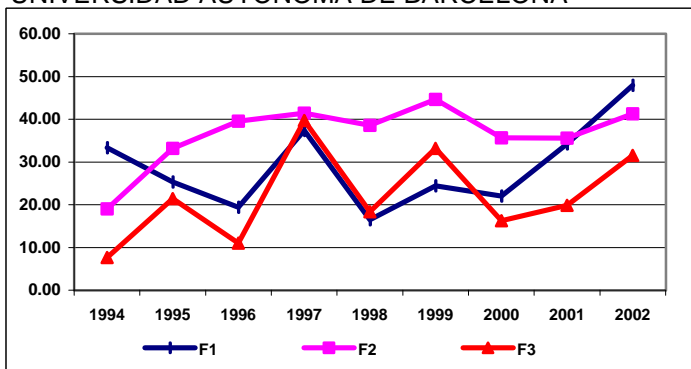


---

**Anexo III**  
**Gráficos (actualizados a 2002) de evolución de los factores por centros**

---

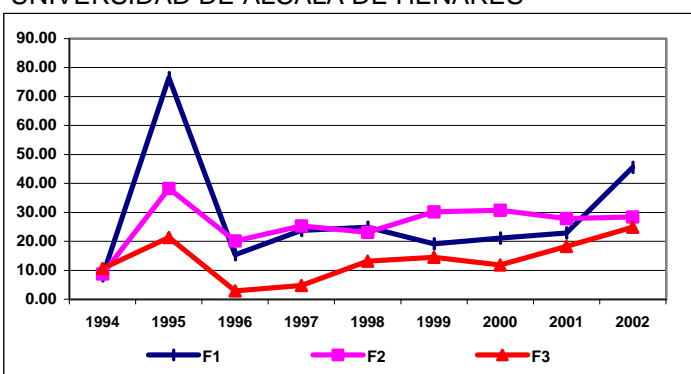
UNIVERSIDAD AUTÓNOMA DE BARCELONA



UAB

	F1	F2	F3
1994	33.31	19.02	7.63
1995	25.30	33.17	21.40
1996	19.43	39.52	11.03
1997	37.39	41.42	39.67
1998	16.50	38.56	18.33
1999	24.39	44.64	33.18
2000	22.01	35.65	16.26
2001	34.21	35.58	19.83
2002	47.92	41.29	31.50

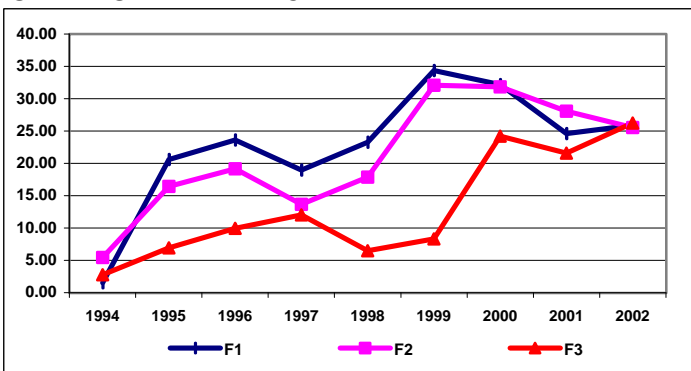
UNIVERSIDAD DE ALCALÀ DE HENARES



UAH

	F1	F2	F3
1994	8.07	8.68	10.61
1995	76.53	38.22	21.34
1996	15.40	20.08	2.84
1997	23.74	25.37	4.71
1998	24.85	23.06	13.12
1999	19.11	30.21	14.49
2000	21.07	30.76	11.82
2001	22.92	27.81	18.30
2002	45.60	28.44	24.91

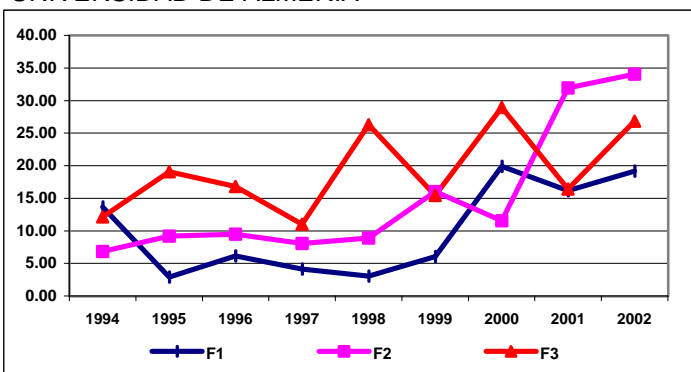
UNIVERSIDAD DE ALICANTE



UAL

	F1	F2	F3
1994	1.53	5.42	2.79
1995	20.57	16.44	6.93
1996	23.60	19.18	9.94
1997	18.95	13.67	12.02
1998	23.27	17.86	6.50
1999	34.34	32.09	8.30
2000	32.18	31.81	24.22
2001	24.63	28.08	21.60
2002	25.89	25.53	26.22

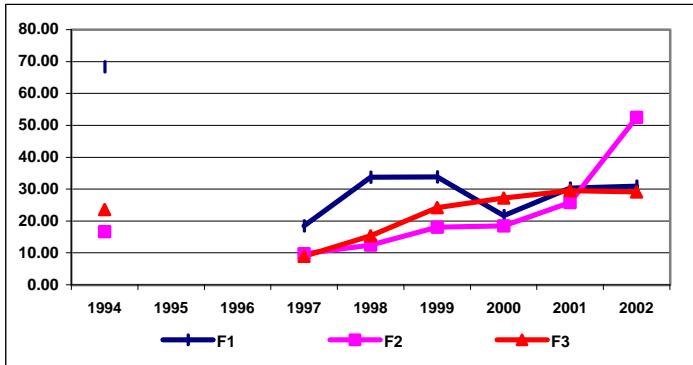
UNIVERSIDAD DE ALMERÍA



UALM

	F1	F2	F3
1994	13.66	6.85	12.15
1995	2.89	9.20	19.06
1996	6.16	9.46	16.82
1997	4.13	8.05	10.98
1998	3.04	8.90	26.30
1999	6.06	16.03	15.44
2000	19.91	11.55	28.96
2001	16.15	31.95	16.39
2002	19.19	34.04	26.81

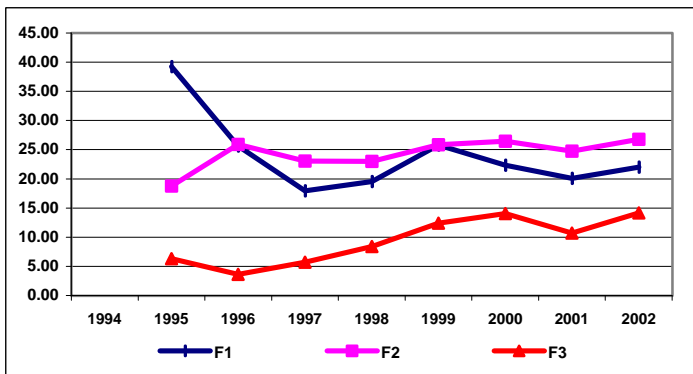
UNIVERSIDAD AUTONOMA DE MADRID



UAM

	F1	F2	F3
1994	68.32	16.68	23.56
1995			
1996			
1997	18.47	9.72	8.91
1998	33.72	12.48	15.36
1999	33.83	18.07	24.19
2000	21.65	18.45	27.15
2001	30.29	25.75	29.49
2002	30.95	52.48	29.07

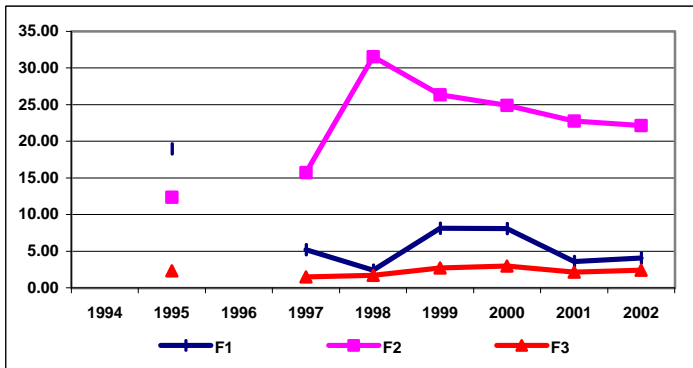
UNIVERSIDAD ANTONIO DE NEBRIJA



UAN

	F1	F2	F3
1994			
1995	39.22	18.76	6.32
1996	25.63	25.92	3.63
1997	17.94	23.03	5.73
1998	19.54	22.98	8.42
1999	25.80	25.85	12.41
2000	22.31	26.43	14.04
2001	20.06	24.73	10.71
2002	22.02	26.76	14.18

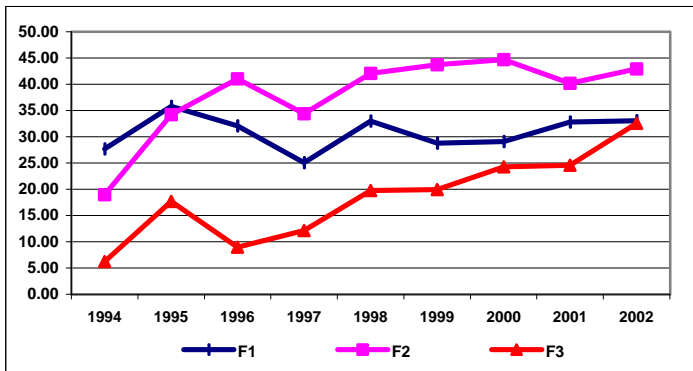
UNIVERSIDAD ALFONSO X EL SABIO



UAX

	F1	F2	F3
1994			
1995	18.95	12.35	2.33
1996			
1997	5.22	15.72	1.48
1998	2.42	31.55	1.71
1999	8.11	26.34	2.72
2000	8.08	24.89	2.99
2001	3.60	22.78	2.15
2002	4.06	22.14	2.41

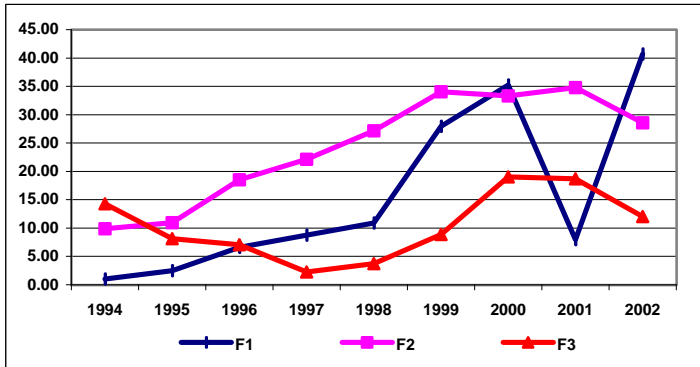
UNIVERSIDAD DE BARCELONA



UBA

	F1	F2	F3
1994	27.68	18.94	6.20
1995	35.79	34.21	17.69
1996	32.07	41.02	8.94
1997	25.06	34.37	12.14
1998	33.01	42.08	19.78
1999	28.76	43.69	19.93
2000	29.07	44.68	24.24
2001	32.82	40.16	24.57
2002	33.04	42.95	32.54

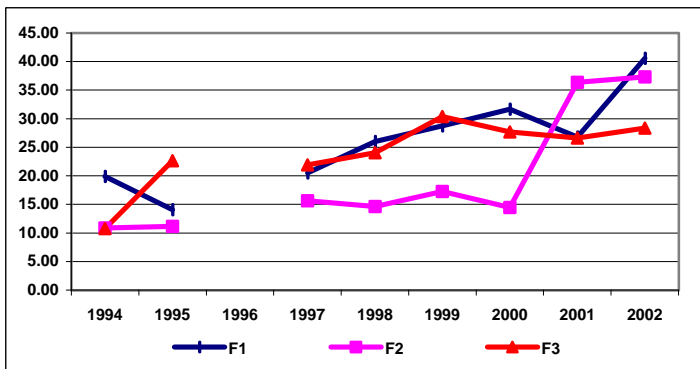
UNIVERSIDAD DE BURGOS



UBU

	F1	F2	F3
1994	1.02	9.88	14.29
1995	2.46	10.93	8.15
1996	6.61	18.50	7.03
1997	8.76	22.13	2.25
1998	10.89	27.16	3.74
1999	27.92	34.05	8.86
2000	35.25	33.33	19.03
2001	7.96	34.79	18.71
2002	40.72	28.59	12.02

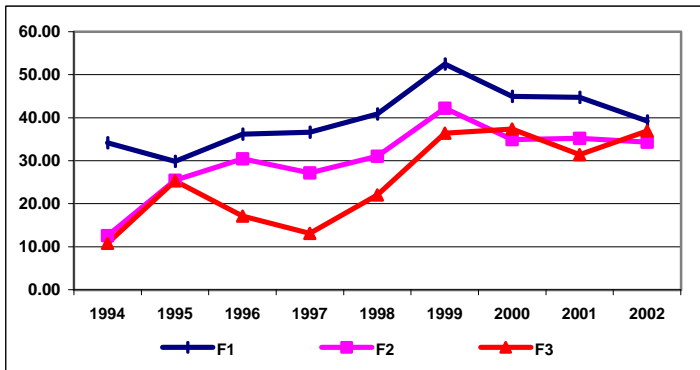
UNIVERSIDAD DE CADIZ



UCA

	F1	F2	F3
1994	19.92	10.86	10.77
1995	14.08	11.14	22.64
1996	20.50	15.62	21.94
1997	26.00	14.63	24.05
1998	28.76	17.23	30.40
1999	31.67	14.46	27.67
2000	26.78	36.39	26.60
2001	40.60	37.30	28.37
2002	40.60	37.30	28.37

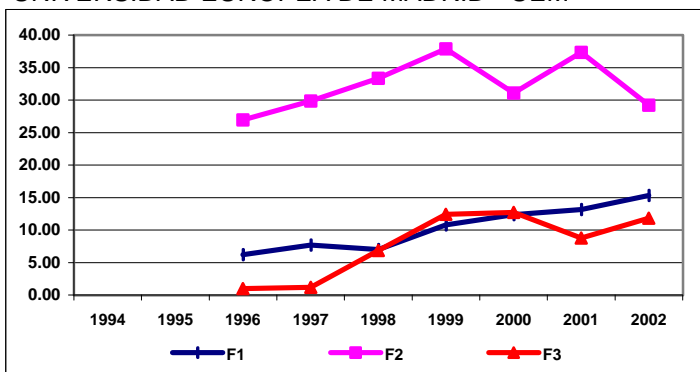
UNIVERSIDAD CARLOS III DE MADRID



UCAR

	F1	F2	F3
1994	34.17	12.62	10.83
1995	29.87	25.48	25.31
1996	36.20	30.44	17.14
1997	36.64	27.17	13.14
1998	40.90	31.06	22.00
1999	52.47	42.18	36.42
2000	44.96	34.94	37.38
2001	44.75	35.23	31.42
2002	39.21	34.29	36.96

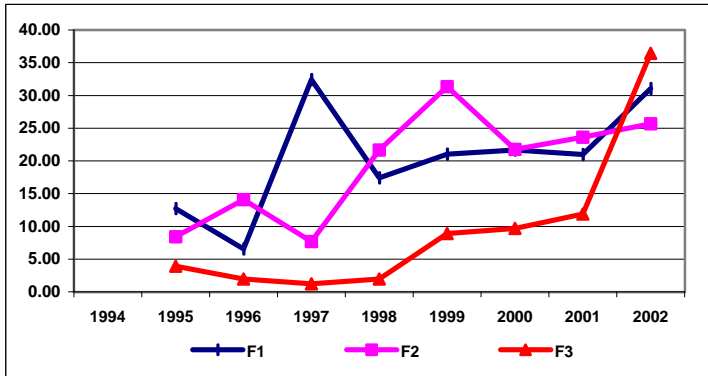
UNIVERSIDAD EUROPEA DE MADRID - UEM



UEM

	F1	F2	F3
1994			
1995			
1996	6.22	26.95	1.00
1997	7.69	29.84	1.17
1998	7.01	33.36	6.87
1999	10.80	37.89	12.40
2000	12.37	31.07	12.69
2001	13.17	37.32	8.77
2002	15.33	29.22	11.82

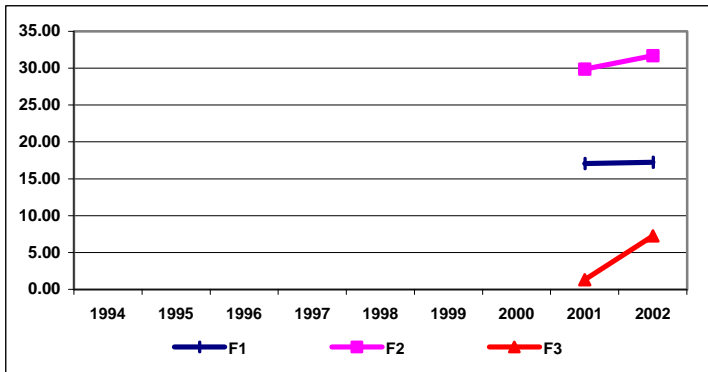
UNIVERSIDAD SAN PABLO - CEU



UCEU

	F1	F2	F3
1994			
1995	12.71	8.39	3.91
1996	6.58	14.06	1.95
1997	32.40	7.69	1.24
1998	17.40	21.67	1.95
1999	21.01	31.34	8.91
2000	21.69	21.75	9.67
2001	20.97	23.60	11.87
2002	31.05	25.68	36.41

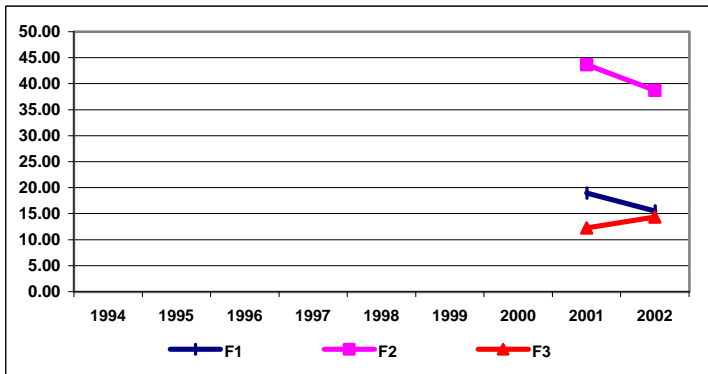
UNIVERSIDAD CARDENAL HERRERA - CEU



UCH

	F1	F2	F3
1994			
1995			
1996			
1997			
1998			
1999			
2000			
2001	17.07	29.87	1.29
2002	17.23	31.71	7.24

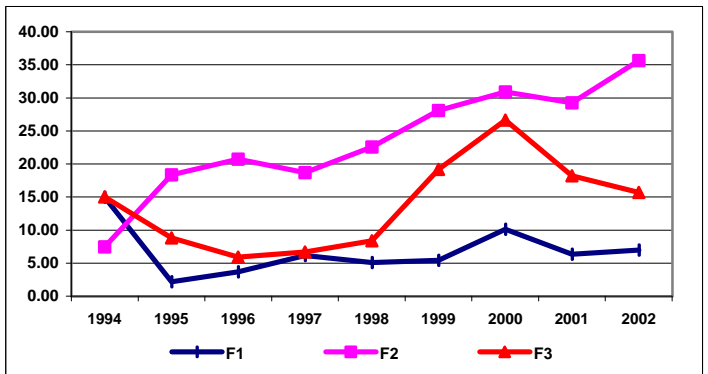
UNIVERSIDAD CAMILO JOSÉ CELA



UCJC

	F1	F2	F3
1994			
1995			
1996			
1997			
1998			
1999			
2000			
2001	18.98	43.69	12.26
2002	15.53	38.72	14.36

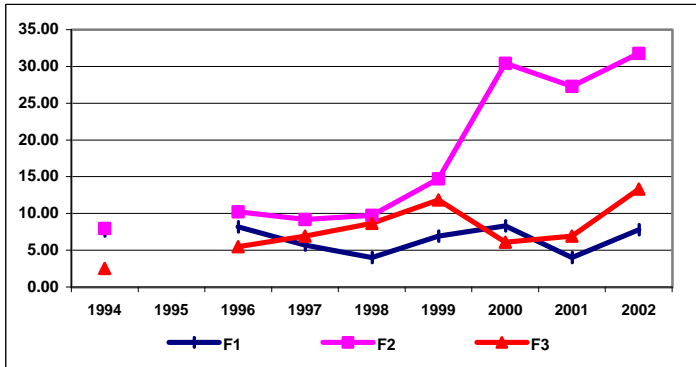
UNIVERSIDAD COMPLUTENSE DE MADRID



UCM

	F1	F2	F3
1994	14.97	7.46	15.00
1995	2.18	18.35	8.80
1996	3.67	20.72	5.92
1997	6.15	18.68	6.68
1998	5.08	22.56	8.38
1999	5.41	28.07	19.16
2000	10.13	30.90	26.66
2001	6.37	29.25	18.20
2002	6.95	35.66	15.67

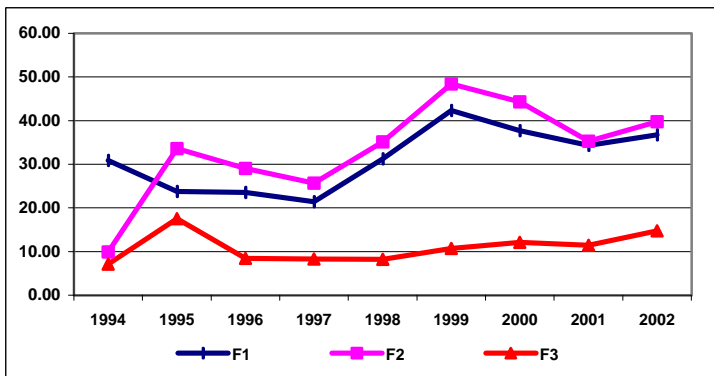
UNIVERSIDAD DE CASTILLA LA MANCHA



UC-M

	F1	F2	F3
1994	7.64	7.95	2.53
1995			
1996	8.17	10.25	5.48
1997	5.69	9.18	6.92
1998	4.01	9.75	8.68
1999	6.93	14.72	11.82
2000	8.29	30.43	6.10
2001	4.00	27.30	6.94
2002	7.81	31.78	13.33

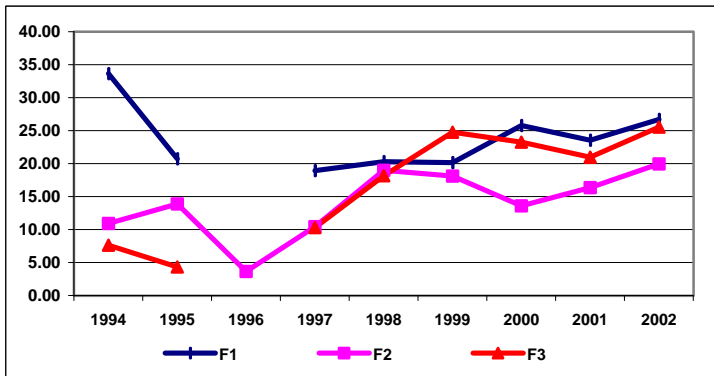
UNIVERSIDAD DE CANTABRIA



UCN

	F1	F2	F3
1994	30.84	9.92	7.12
1995	23.78	33.60	17.52
1996	23.57	29.08	8.47
1997	21.42	25.67	8.29
1998	31.22	35.15	8.23
1999	42.29	48.42	10.70
2000	37.68	44.30	12.14
2001	34.33	35.31	11.43
2002	36.75	39.74	14.78

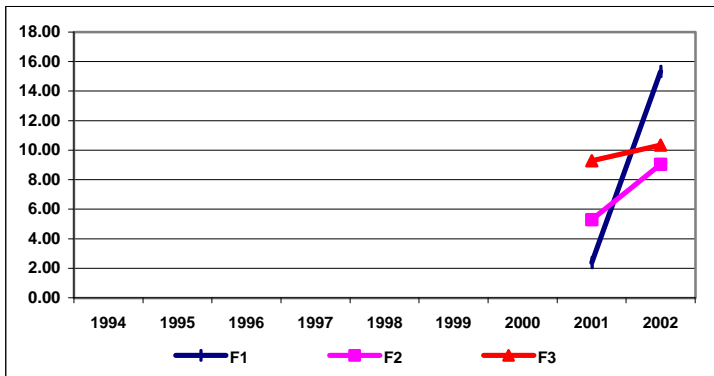
UNIVERSIDAD DE CÓRDOBA



UCO

	F1	F2	F3
1994	33.66	10.91	7.63
1995	20.71	13.89	4.32
1996		3.63	
1997	18.92	10.45	10.31
1998	20.30	18.96	18.13
1999	20.15	18.09	24.78
2000	25.75	13.60	23.26
2001	23.55	16.37	20.99
2002	26.68	19.96	25.54

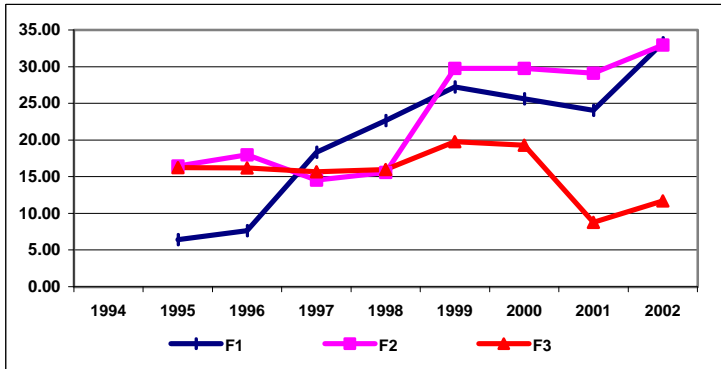
UNIVERSIDAD CATÓLICA SAN ANTONIO DE MURCIA



UCSA

	F1	F2	F3
1994			
1995			
1996			
1997			
1998			
1999			
2000			
2001	2.39	5.28	9.29
2002	15.34	9.05	10.34

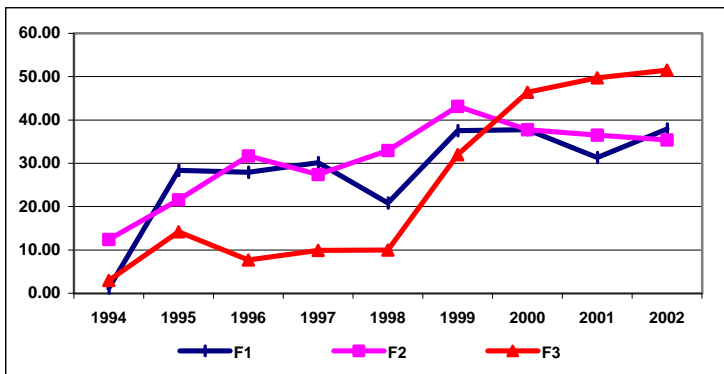
UNIVERSIDAD DE DEUSTO



UDE

	F1	F2	F3
1994			
1995	6.43	16.45	16.24
1996	7.64	17.97	16.18
1997	18.34	14.53	15.65
1998	22.64	15.58	15.96
1999	27.22	29.76	19.77
2000	25.63	29.75	19.29
2001	24.03	29.11	8.79
2002	33.23	32.95	11.69

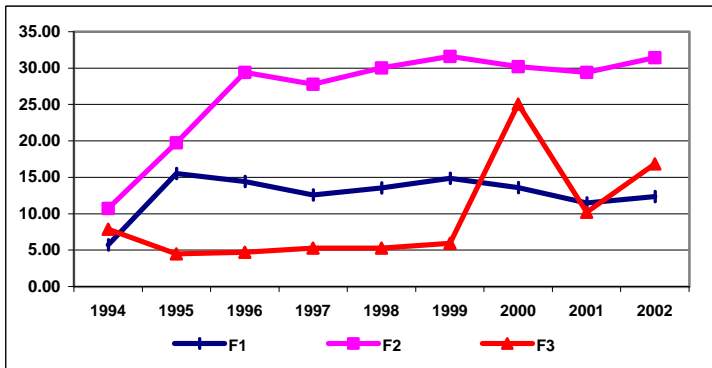
UNIVERSIDAD DE LLEIDA



UDL

	F1	F2	F3
1994	1.16	12.41	2.96
1995	28.38	21.60	14.21
1996	27.92	31.71	7.71
1997	30.13	27.40	9.89
1998	20.83	32.98	9.94
1999	37.53	43.17	31.99
2000	37.76	37.75	46.39
2001	31.33	36.53	49.71
2002	37.89	35.40	51.47

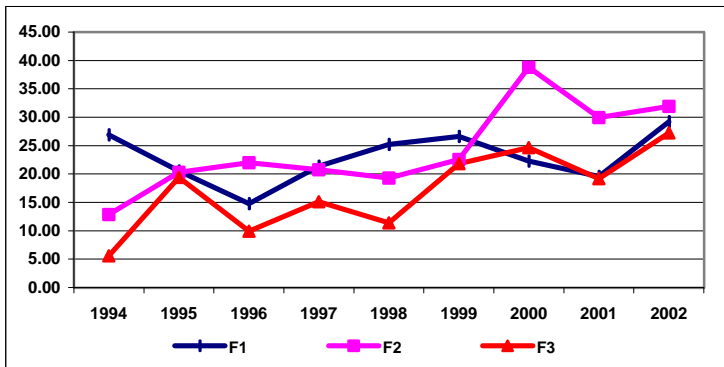
UNIVERSIDAD DE EXTREMADURA



UEX

	F1	F2	F3
1994	5.72	10.71	7.87
1995	15.52	19.73	4.50
1996	14.42	29.43	4.72
1997	12.59	27.80	5.26
1998	13.53	30.04	5.29
1999	14.86	31.61	5.93
2000	13.57	30.19	25.05
2001	11.46	29.42	10.18
2002	12.38	31.46	16.82

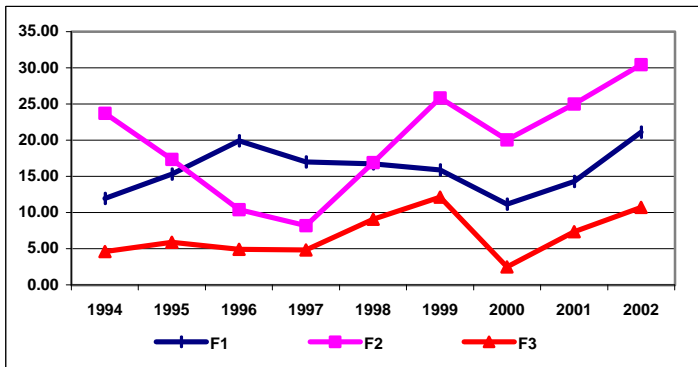
UNIVERSIDAD DE GIRONA



UGI

	F1	F2	F3
1994	26.92	12.88	5.56
1995	20.53	20.28	19.37
1996	14.75	21.97	9.92
1997	21.35	20.73	15.09
1998	25.19	19.27	11.38
1999	26.63	22.54	21.82
2000	22.30	38.81	24.65
2001	19.57	29.95	19.19
2002	29.19	31.93	27.22

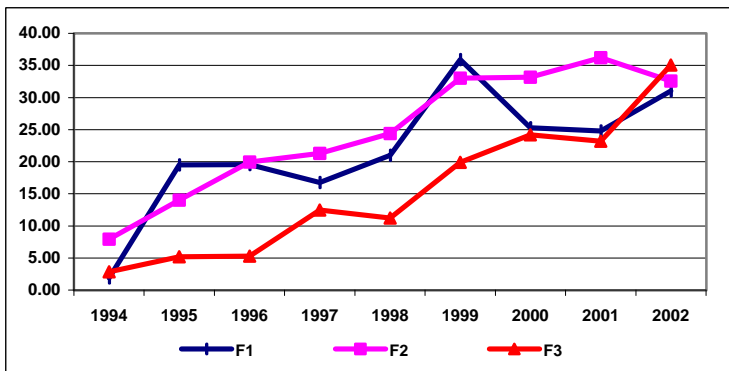
UNIVERSIDAD DE GRANADA



UGR

	F1	F2	F3
1994	11.96	23.71	4.60
1995	15.29	17.34	5.89
1996	19.90	10.39	4.92
1997	16.98	8.18	4.81
1998	16.74	16.90	9.07
1999	15.88	25.86	12.14
2000	11.15	20.03	2.48
2001	14.31	25.00	7.34
2002	21.09	30.44	10.70

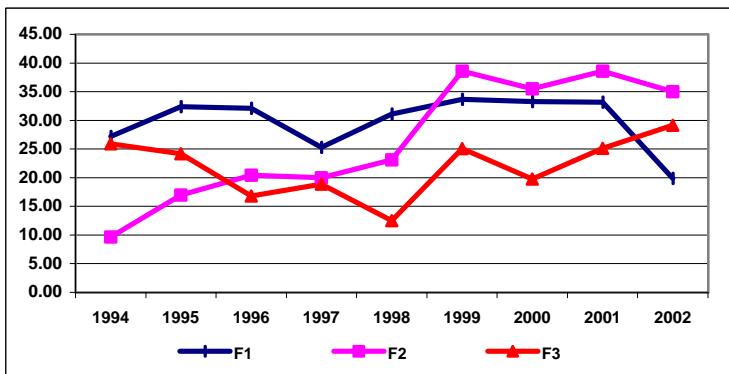
UNIVERSIDAD DE HUELVA



UHU

	F1	F2	F3
1994	1.88	7.93	2.85
1995	19.51	14.02	5.18
1996	19.57	19.93	5.29
1997	16.77	21.32	12.46
1998	21.02	24.40	11.24
1999	35.90	33.03	19.90
2000	25.30	33.14	24.18
2001	24.78	36.20	23.20
2002	31.03	32.58	35.08

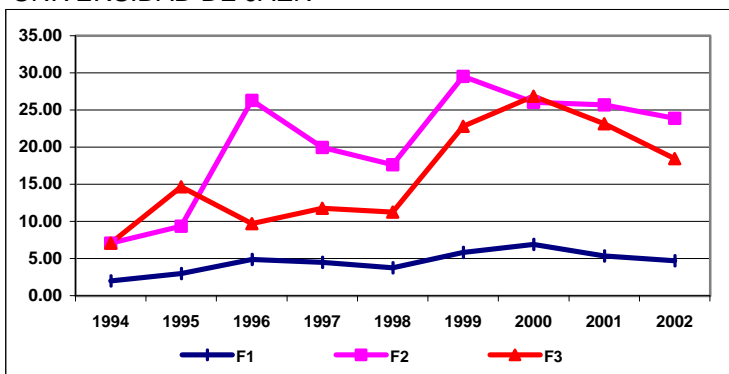
UNIVERSIDAD DE LES ILLES BALEARS



UIB

	F1	F2	F3
1994	27.17	9.64	25.90
1995	32.39	16.95	24.16
1996	32.11	20.42	16.79
1997	25.27	20.00	18.87
1998	31.12	23.14	12.52
1999	33.67	38.56	25.04
2000	33.30	35.54	19.79
2001	33.16	38.60	25.12
2002	19.89	35.00	29.17

UNIVERSIDAD DE JAÉN

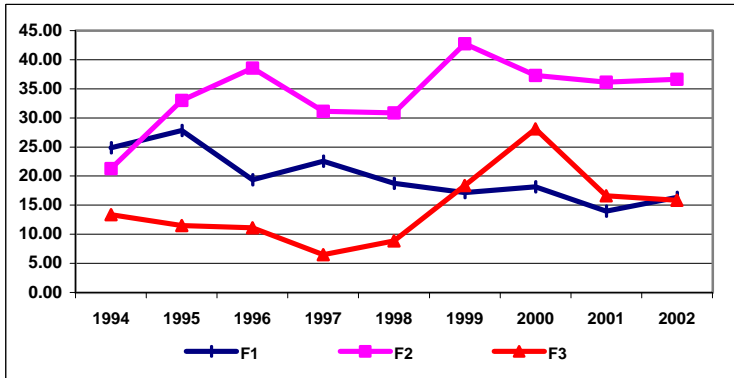


UJA

	F1	F2	F3
1994	1.99	7.09	7.09
1995	2.96	9.36	14.65
1996	4.88	26.28	9.70
1997	4.50	19.98	11.79
1998	3.74	17.65	11.24
1999	5.80	29.53	22.80
2000	6.90	26.05	26.87
2001	5.36	25.70	23.13
2002	4.70	23.89	18.44



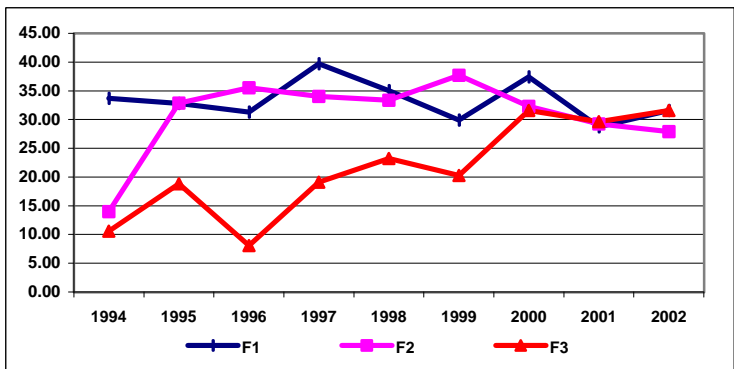
UNIVERSIDAD JAUME I



UJCS

	F1	F2	F3
1994	24.85	21.28	13.36
1995	27.84	32.99	11.50
1996	19.38	38.56	11.13
1997	22.58	31.12	6.48
1998	18.79	30.88	8.86
1999	17.18	42.72	18.35
2000	18.15	37.31	28.13
2001	13.97	36.13	16.60
2002	16.32	36.62	15.83

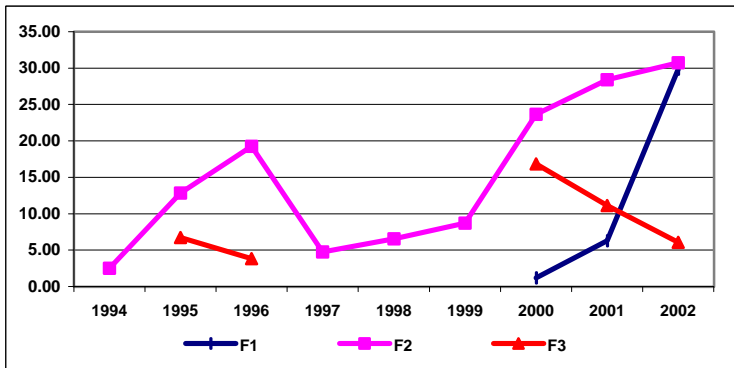
UNIVERSIDAD DA CORUÑA



ULCO

	F1	F2	F3
1994	33.68	13.96	10.59
1995	32.79	32.88	18.83
1996	31.32	35.53	8.10
1997	39.71	34.01	19.11
1998	35.04	33.39	23.21
1999	29.90	37.71	20.25
2000	37.44	32.30	31.56
2001	28.75	29.24	29.63
2002	31.56	27.93	31.59

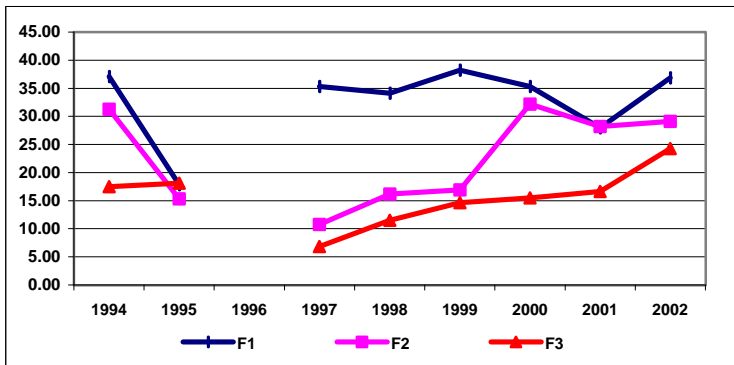
UNIVERSIDAD DE LEÓN



ULE

	F1	F2	F3
1994		2.51	
1995		12.86	6.72
1996		19.26	3.83
1997		4.74	
1998		6.54	
1999		8.72	
2000	1.18	23.66	16.83
2001	6.27	28.42	11.12
2002	29.86	30.73	6.06

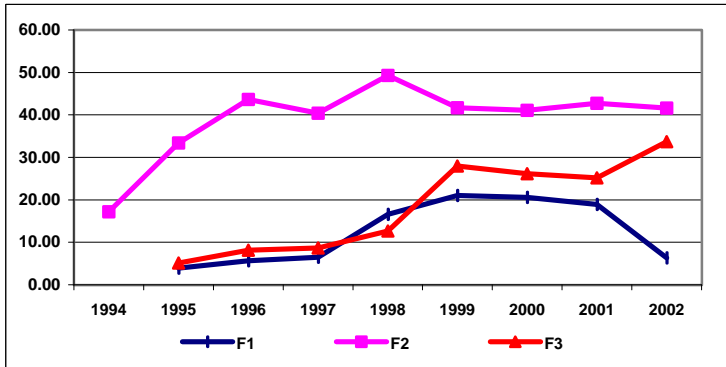
UNIVERSIDAD LA LAGUNA



ULL

	F1	F2	F3
1994	37.10	31.28	17.50
1995	17.80	15.30	18.09
1996			
1997	35.31	10.77	6.86
1998	34.12	16.19	11.49
1999	38.22	16.91	14.62
2000	35.30	32.16	15.48
2001	27.98	28.19	16.61
2002	36.85	29.11	24.25

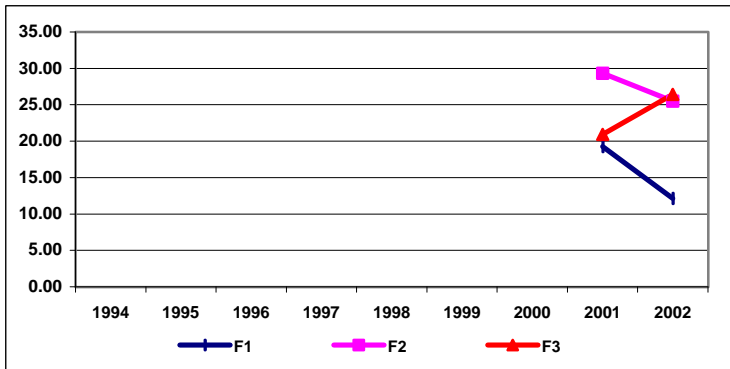
UNIVERSIDAD DE MALAGA



UMA

	F1	F2	F3
1994		17.17	
1995	3.95	33.37	5.14
1996	5.68	43.62	8.14
1997	6.48	40.42	8.66
1998	16.55	49.29	12.64
1999	21.01	41.72	27.93
2000	20.59	41.10	26.13
2001	18.89	42.77	25.19
2002	6.30	41.61	33.72

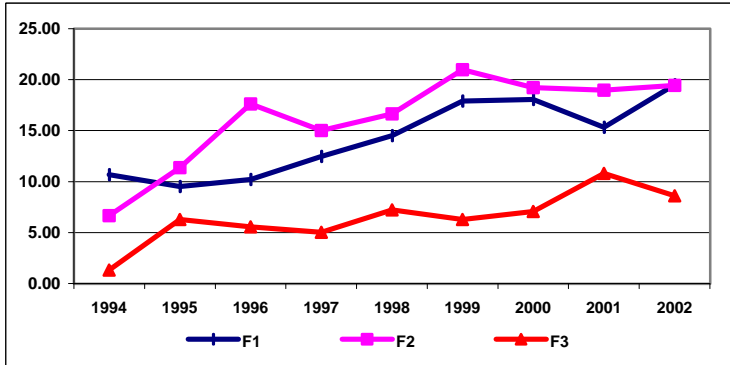
UNIVERSIDAD DE MONDRAGÓN



UMO

	F1	F2	F3
1994			
1995			
1996			
1997			
1998			
1999			
2000			
2001	19.26	29.34	20.93
2002	12.11	25.52	26.44

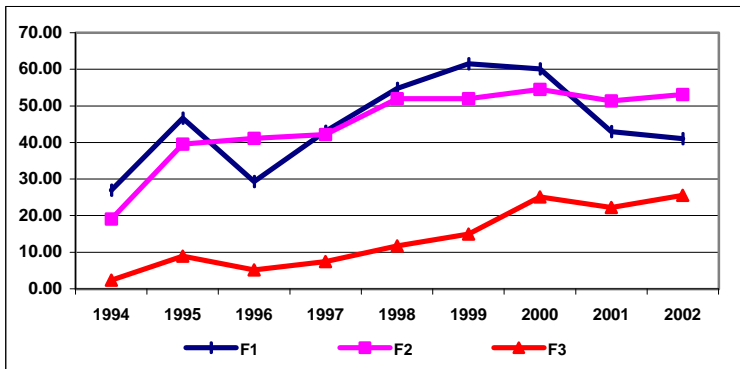
UNIVERSIDAD DE MURCIA



UMU

	F1	F2	F3
1994	10.69	6.67	1.32
1995	9.52	11.37	6.27
1996	10.21	17.62	5.57
1997	12.45	15.02	5.04
1998	14.51	16.65	7.22
1999	17.92	20.97	6.27
2000	18.07	19.23	7.08
2001	15.33	18.96	10.82
2002	19.49	19.45	8.60

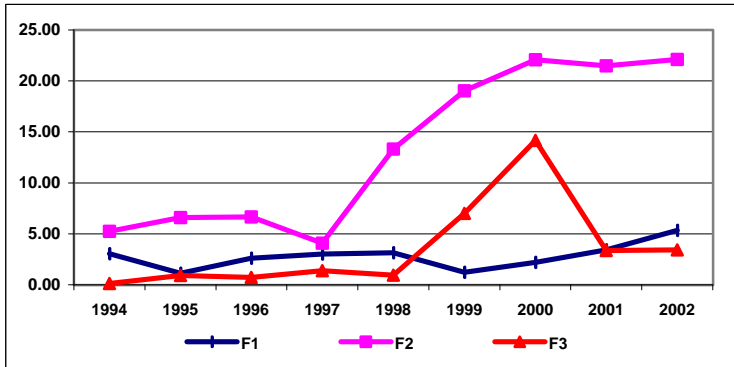
UNIVERSIDAD DE NAVARRA



UNAV

	F1	F2	F3
1994	26.92	19.08	2.35
1995	46.64	39.52	8.94
1996	29.27	41.12	5.13
1997	43.08	42.21	7.47
1998	54.81	52.00	11.74
1999	61.56	51.99	14.99
2000	60.08	54.52	25.15
2001	42.98	51.40	22.19
2002	41.07	53.12	25.55

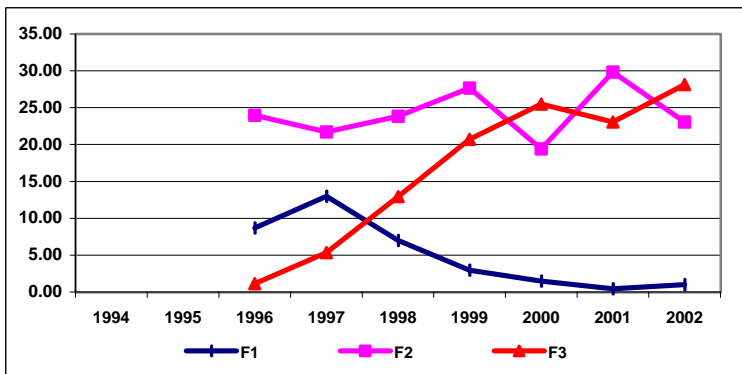
UNIVERSIDAD NACIONAL A DISTANCIA



UNED

	F1	F2	F3
1994	3.04	5.23	0.12
1995	1.13	6.58	0.92
1996	2.62	6.66	0.72
1997	3.01	4.08	1.38
1998	3.16	13.30	0.94
1999	1.22	19.04	7.00
2000	2.20	22.09	14.16
2001	3.41	21.47	3.37
2002	5.35	22.11	3.43

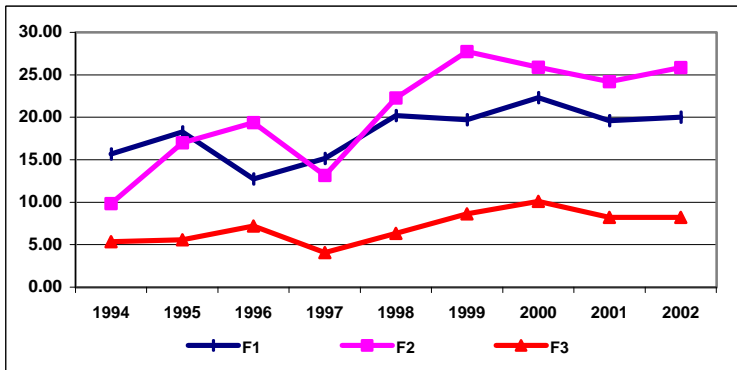
UNIVERSIDAD OBERTA DE CATALUNYA



UOC

	F1	F2	F3
1994	8.68	23.95	1.11
1995	12.99	21.70	5.34
1996	7.00	23.83	12.93
1997	2.96	27.67	20.71
1998	1.49	19.41	25.49
1999	0.43	29.81	23.08
2000	0.99	23.08	28.13
2001	0.99	23.08	28.13
2002	0.99	23.08	28.13

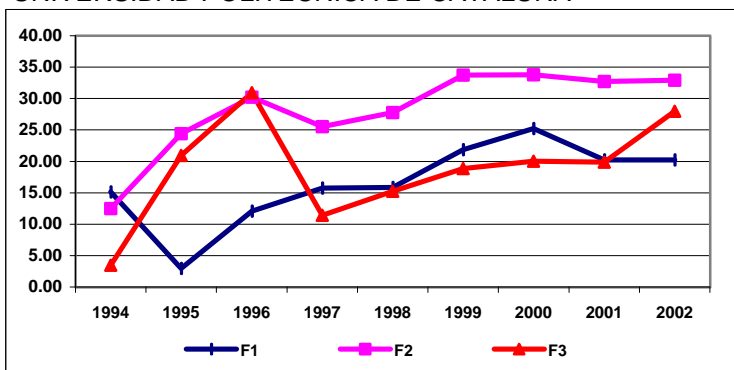
UNIVERSIDAD DE OVIEDO



UOV

	F1	F2	F3
1994	15.68	9.85	5.37
1995	18.29	17.01	5.56
1996	12.75	19.36	7.21
1997	15.14	13.15	4.09
1998	20.20	22.28	6.31
1999	19.70	27.72	8.62
2000	22.31	25.90	10.10
2001	19.60	24.19	8.21
2002	20.03	25.85	8.22

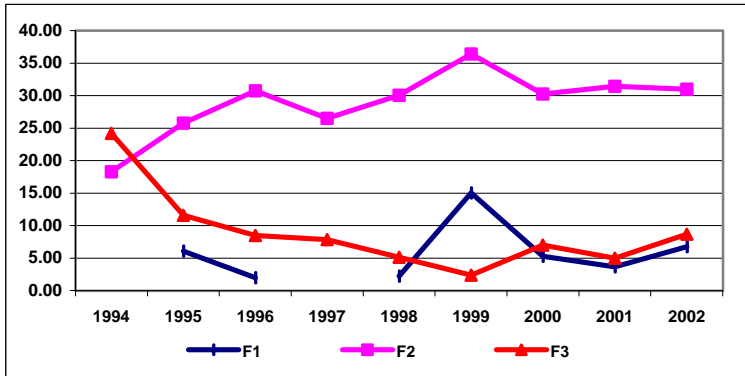
UNIVERSIDAD POLITECNICA DE CATALUÑA



UPC

	F1	F2	F3
1994	15.16	12.49	3.47
1995	2.96	24.43	20.93
1996	12.08	30.20	30.91
1997	15.74	25.53	11.40
1998	15.84	27.77	15.25
1999	21.84	33.72	18.84
2000	25.20	33.78	20.01
2001	20.25	32.72	19.86
2002	20.24	32.91	27.99

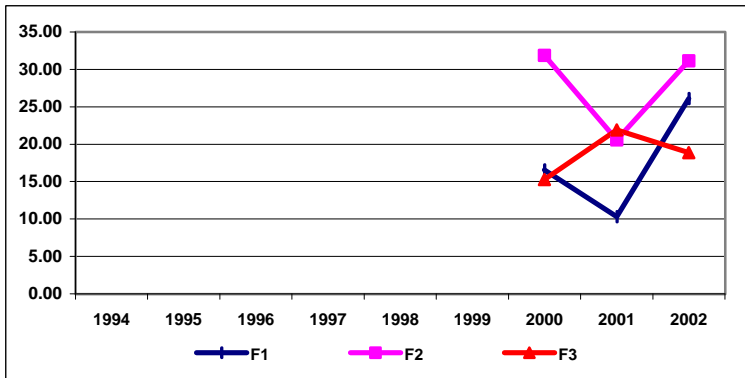
UNIVERSIDAD PONTIFICA DE COMILLAS



UPCO

	F1	F2	F3
1994		18.26	24.17
1995	6.05	25.76	11.58
1996	1.97	30.74	8.45
1997		26.48	7.83
1998	2.20	30.04	5.10
1999	15.04	36.40	2.38
2000	5.28	30.27	6.97
2001	3.65	31.41	4.96
2002	6.76	30.97	8.67

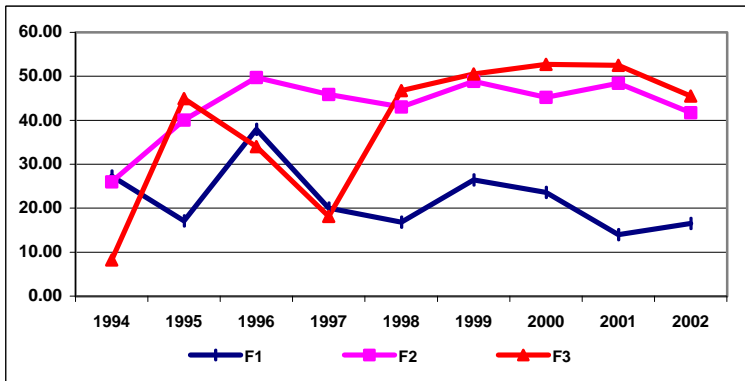
UNIVERSIDAD POLITÉCNICA DE CARTAGENA



UPCT

	F1	F2	F3
1994			
1995			
1996			
1997			
1998			
1999			
2000	16.57	31.89	15.27
2001	10.33	20.56	21.90
2002	26.11	31.14	18.89

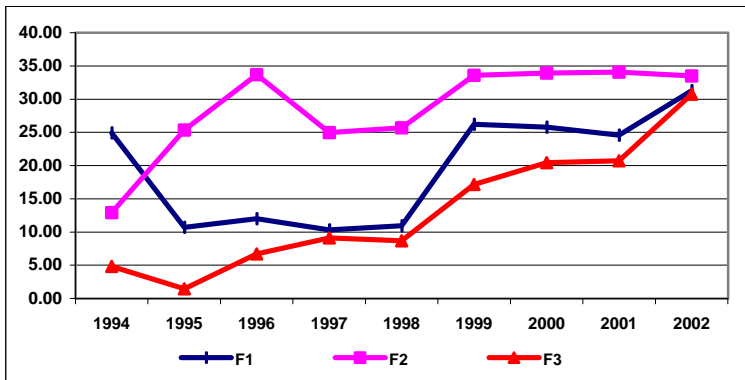
UNIVERSIDAD POMPEU FABRA



UPF

	F1	F2	F3
1994	27.28	25.99	8.20
1995	17.12	40.01	44.96
1996	37.91	49.77	33.99
1997	20.04	45.89	18.12
1998	16.85	43.01	46.73
1999	26.42	48.83	50.50
2000	23.60	45.23	52.75
2001	13.99	48.43	52.50
2002	16.57	41.72	45.48

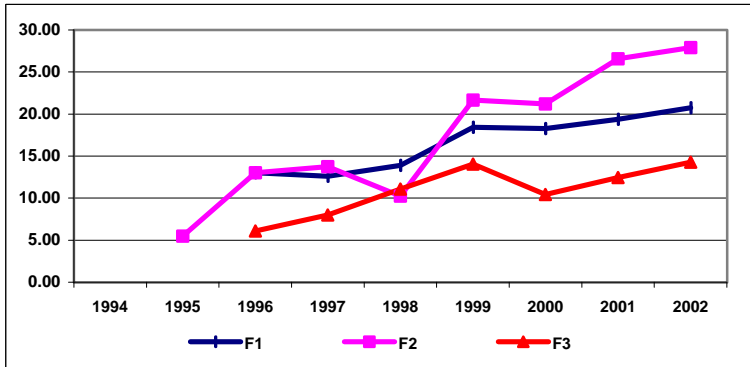
UNIVERSIDAD DE LAS PALMAS DE GRAN CANARIA



UPGC

	F1	F2	F3
1994	24.91	12.91	4.83
1995	10.71	25.37	1.42
1996	12.02	33.70	6.71
1997	10.31	24.95	9.11
1998	10.93	25.70	8.66
1999	26.22	33.60	17.18
2000	25.76	33.92	20.42
2001	24.58	34.05	20.74
2002	31.28	33.51	30.75

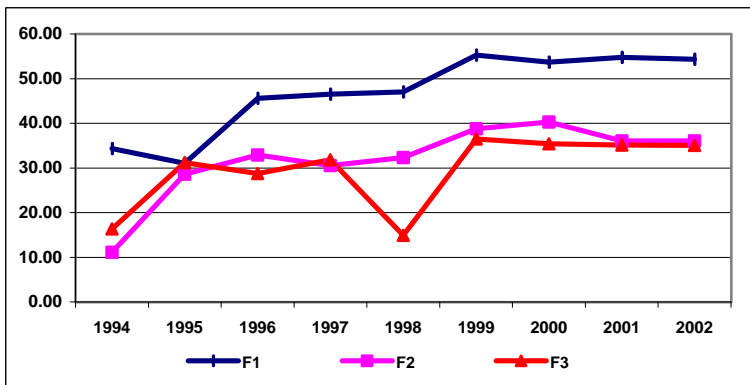
UNIVERSIDAD POLITECNICA DE MADRID



UPM

	F1	F2	F3
1994			
1995		5.48	
1996	13.03	13.01	6.11
1997	12.62	13.76	7.98
1998	13.91	10.24	11.07
1999	18.42	21.66	14.04
2000	18.29	21.22	10.43
2001	19.37	26.57	12.45
2002	20.73	27.90	14.27

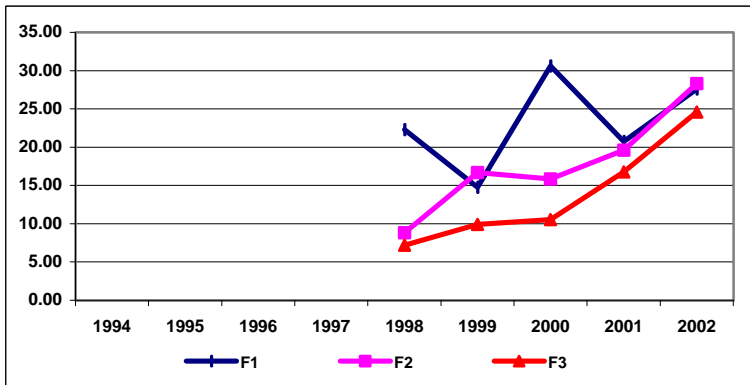
UNIVERSIDAD PÚBLICA DE NAVARRA



UPNA

	F1	F2	F3
1994	34.30	11.09	16.34
1995	31.07	28.58	31.16
1996	45.57	32.87	28.76
1997	46.53	30.55	31.80
1998	47.05	32.36	14.89
1999	55.25	38.77	36.47
2000	53.70	40.30	35.38
2001	54.78	36.09	35.10
2002	54.34	36.03	35.04

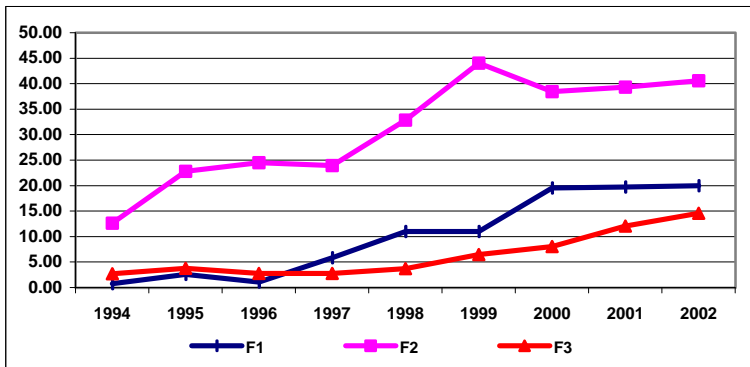
UNIVERSIDAD PABLO DE OLAVIDE



UPO

	F1	F2	F3
1994			
1995			
1996			
1997			
1998	22.29	8.82	7.20
1999	14.75	16.67	9.91
2000	30.63	15.84	10.55
2001	20.74	19.62	16.75
2002	27.61	28.30	24.59

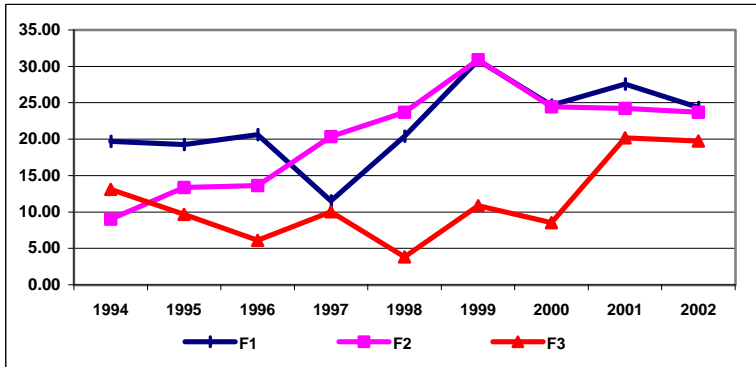
UNIVERSIDAD PONTÍFICA DE SALAMANCA



UPSA

	F1	F2	F3
1994	0.74	12.62	2.72
1995	2.55	22.78	3.76
1996	1.10	24.50	2.74
1997	5.87	23.94	2.77
1998	10.99	32.84	3.70
1999	10.97	44.00	6.46
2000	19.54	38.43	8.06
2001	19.70	39.35	12.04
2002	19.99	40.60	14.57

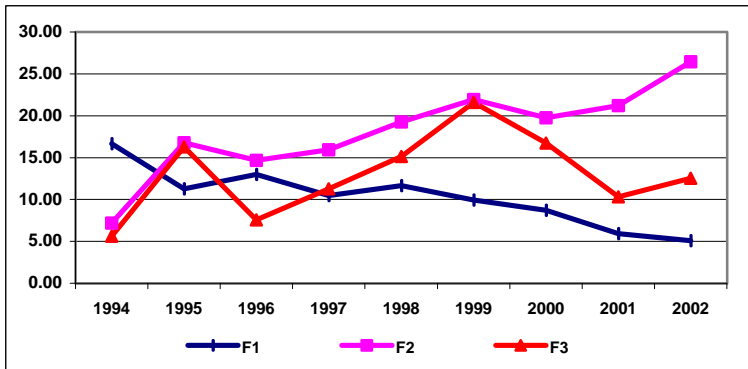
UNIVERSIDAD DEL PAÍS VASCO



UPV

	F1	F2	F3
1994	19.68	9.02	13.09
1995	19.26	13.37	9.67
1996	20.60	13.61	6.11
1997	11.50	20.35	10.01
1998	20.42	23.69	3.85
1999	30.83	30.92	10.88
2000	24.69	24.44	8.54
2001	27.58	24.24	20.18
2002	24.35	23.68	19.75

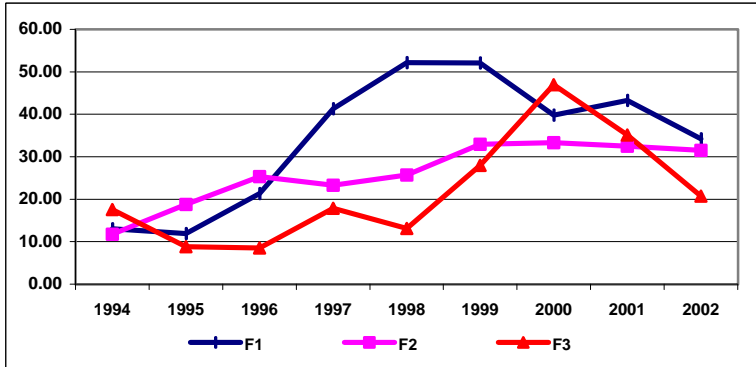
UNIVERSIDAD POLITECNICA DE VALENCIA



UPVA

	F1	F2	F3
1994	16.64	7.20	5.63
1995	11.29	16.77	16.27
1996	12.99	14.66	7.56
1997	10.46	15.93	11.26
1998	11.66	19.25	15.14
1999	9.92	21.95	21.58
2000	8.70	19.77	16.74
2001	5.93	21.23	10.33
2002	5.07	26.45	12.53

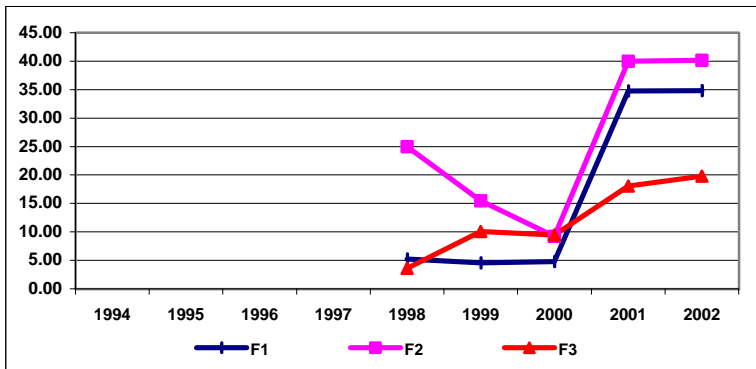
UNIVERSIDAD DE LA RIOJA



URI

	F1	F2	F3
1994	13.06	11.75	17.56
1995	11.93	18.76	8.84
1996	21.34	25.31	8.54
1997	41.31	23.29	17.83
1998	52.18	25.71	13.09
1999	52.09	32.97	28.00
2000	39.82	33.34	46.95
2001	43.25	32.48	35.13
2002	34.20	31.51	20.75

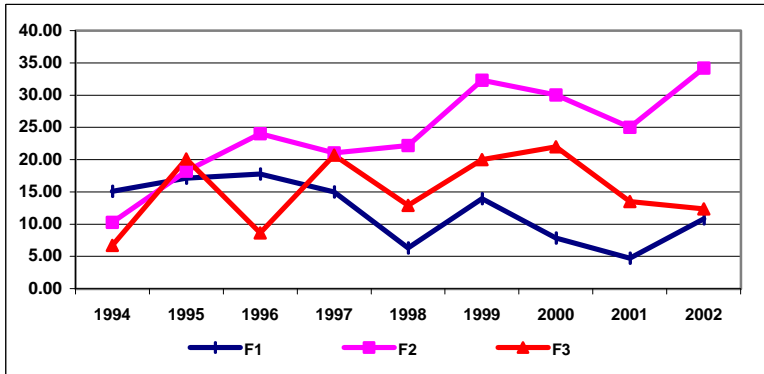
UNIVERSIDAD REY JUAN CARLOS



URJC

	F1	F2	F3
1994			
1995			
1996			
1997			
1998	5.26	24.99	3.60
1999	4.56	15.48	10.05
2000	4.78	9.21	9.46
2001	34.78	39.99	18.07
2002	34.84	40.18	19.82

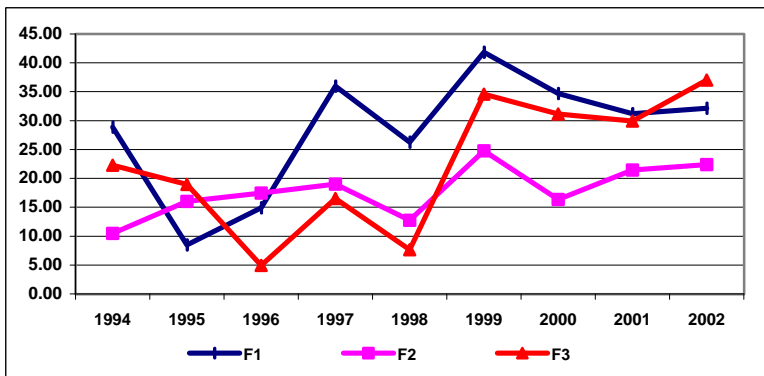
UNIVERSIDAD RAMON LLULL



URLL

	F1	F2	F3
1994	15.10	10.27	6.69
1995	17.12	18.23	20.09
1996	17.78	24.01	8.66
1997	14.97	21.03	20.68
1998	6.33	22.19	12.91
1999	13.92	32.29	19.98
2000	7.86	30.01	21.98
2001	4.72	25.00	13.51
2002	10.84	34.19	12.36

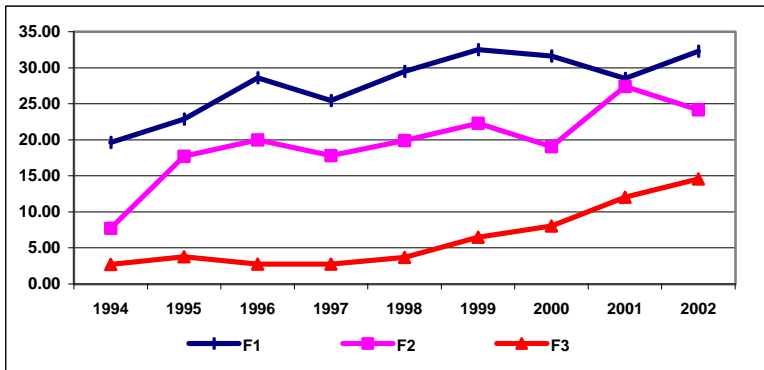
UNIVERSIDAD ROVIRA Y VIRGILI



URV

	F1	F2	F3
1994	28.86	10.45	22.30
1995	8.48	16.02	18.93
1996	14.89	17.44	4.92
1997	35.97	19.01	16.50
1998	26.28	12.74	7.65
1999	41.86	24.79	34.58
2000	34.72	16.34	31.13
2001	31.17	21.46	29.90
2002	32.17	22.38	37.03

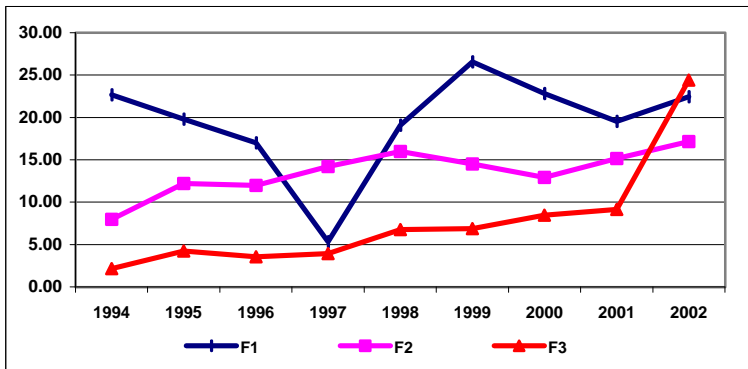
UNIVERSIDAD DE SALAMANCA



USA

	F1	F2	F3
1994	19.65	7.73	2.72
1995	22.86	17.72	3.76
1996	28.59	19.98	2.74
1997	25.43	17.80	2.77
1998	29.50	19.88	3.70
1999	32.52	22.29	6.46
2000	31.64	19.04	8.06
2001	28.50	27.40	12.04
2002	32.29	24.17	14.57

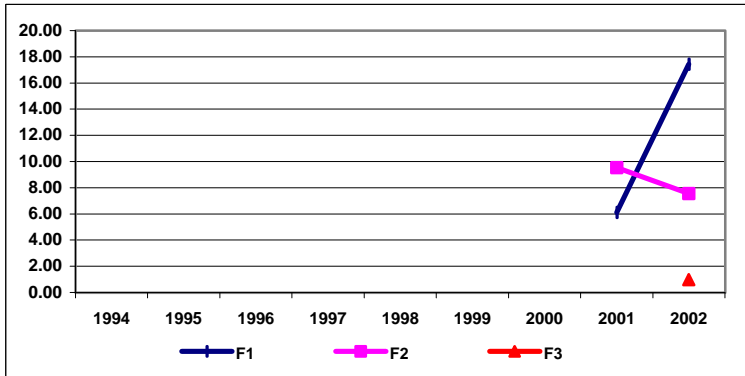
UNIVERSIDAD DE SEVILLA



USE

	F1	F2	F3
1994	22.67	7.98	2.14
1995	19.80	12.20	4.23
1996	16.99	11.99	3.54
1997	5.32	14.22	3.94
1998	19.09	15.99	6.78
1999	26.58	14.52	6.89
2000	22.81	12.92	8.45
2001	19.55	15.15	9.15
2002	22.45	17.17	24.40

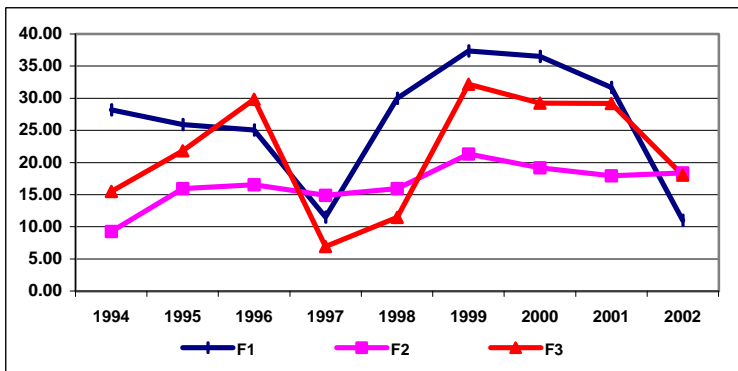
### UNIVERSIDAD SEK



### USEK

	F1	F2	F3
1994			
1995			
1996			
1997			
1998			
1999			
2000			
2001	6.11	9.54	
2002	17.44	7.55	0.97

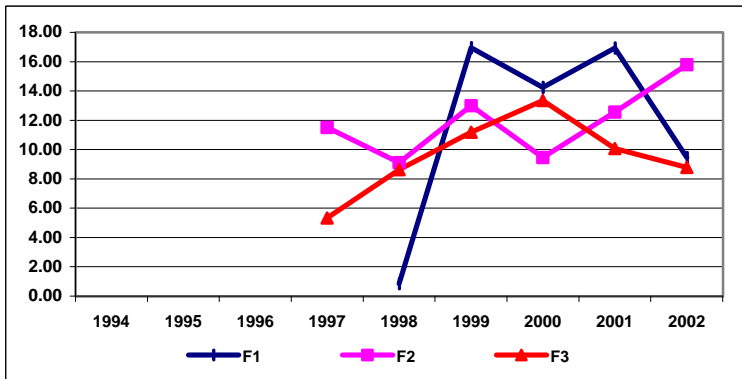
### UNIVERSIDAD DE SANTIAGO DE COMPOSTELA



### USTC

	F1	F2	F3
1994	28.22	9.25	15.48
1995	25.89	15.94	21.79
1996	25.07	16.55	29.83
1997	11.51	14.90	6.93
1998	29.99	15.94	11.45
1999	37.36	21.34	32.16
2000	36.50	19.20	29.24
2001	31.67	17.93	29.17
2002	11.00	18.37	18.06

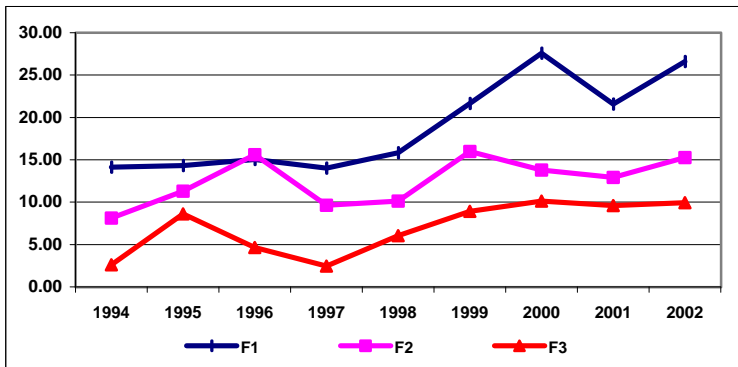
### UNIVERSIDAD DE VIC



### UV

	F1	F2	F3
1994			
1995			
1996			
1997		11.52	5.34
1998	0.86	9.11	8.64
1999	16.95	12.99	11.18
2000	14.24	9.46	13.34
2001	16.93	12.56	10.06
2002	9.45	15.79	8.79

### UNIVERSIDAD DE VALLADOLID

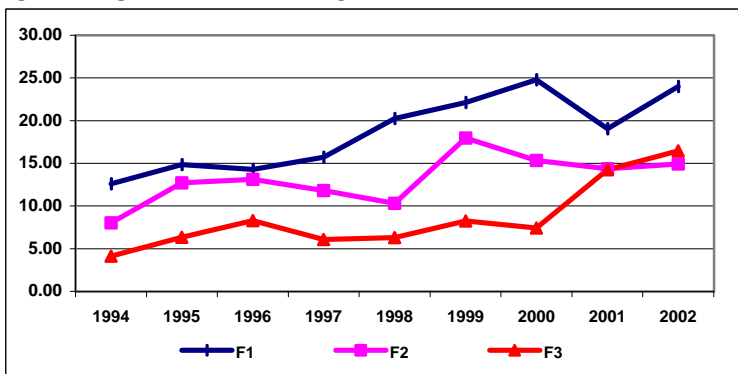


### UVA

	F1	F2	F3
1994	14.12	8.12	2.60
1995	14.31	11.30	8.63
1996	15.02	15.61	4.66
1997	14.01	9.64	2.46
1998	15.82	10.12	6.03
1999	21.65	15.98	8.91
2000	27.60	13.80	10.14
2001	21.56	12.92	9.59
2002	26.60	15.26	9.92



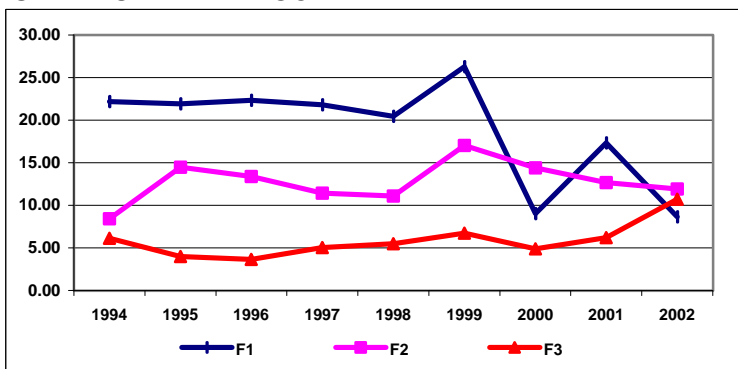
UNIVERSIDAD DE VALENCIA



UVEG

	F1	F2	F3
1994	12.62	8.03	4.12
1995	14.84	12.71	6.34
1996	14.30	13.13	8.29
1997	15.70	11.80	6.08
1998	20.24	10.32	6.32
1999	22.14	17.96	8.26
2000	24.77	15.35	7.41
2001	19.04	14.37	14.25
2002	23.99	14.93	16.45

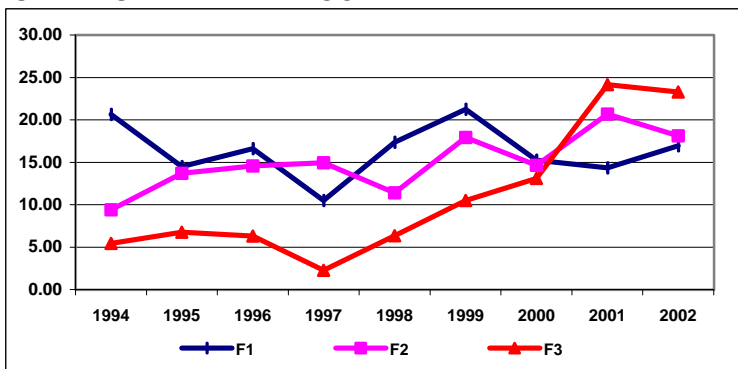
UNIVERSIDAD DE VIGO



UVI

	F1	F2	F3
1994	22.19	8.44	6.14
1995	21.90	14.46	3.99
1996	22.34	13.39	3.64
1997	21.81	11.42	5.05
1998	20.44	11.07	5.50
1999	26.28	17.04	6.72
2000	9.03	14.39	4.90
2001	17.32	12.68	6.19
2002	8.64	11.93	10.72

UNIVERSIDAD DE ZARAGOZA



UZA

	F1	F2	F3
1994	20.65	9.41	5.42
1995	14.50	13.70	6.75
1996	16.59	14.55	6.32
1997	10.50	14.93	2.27
1998	17.35	11.40	6.33
1999	21.26	17.91	10.50
2000	15.26	14.64	13.08
2001	14.35	20.69	24.15
2002	16.96	18.10	23.30